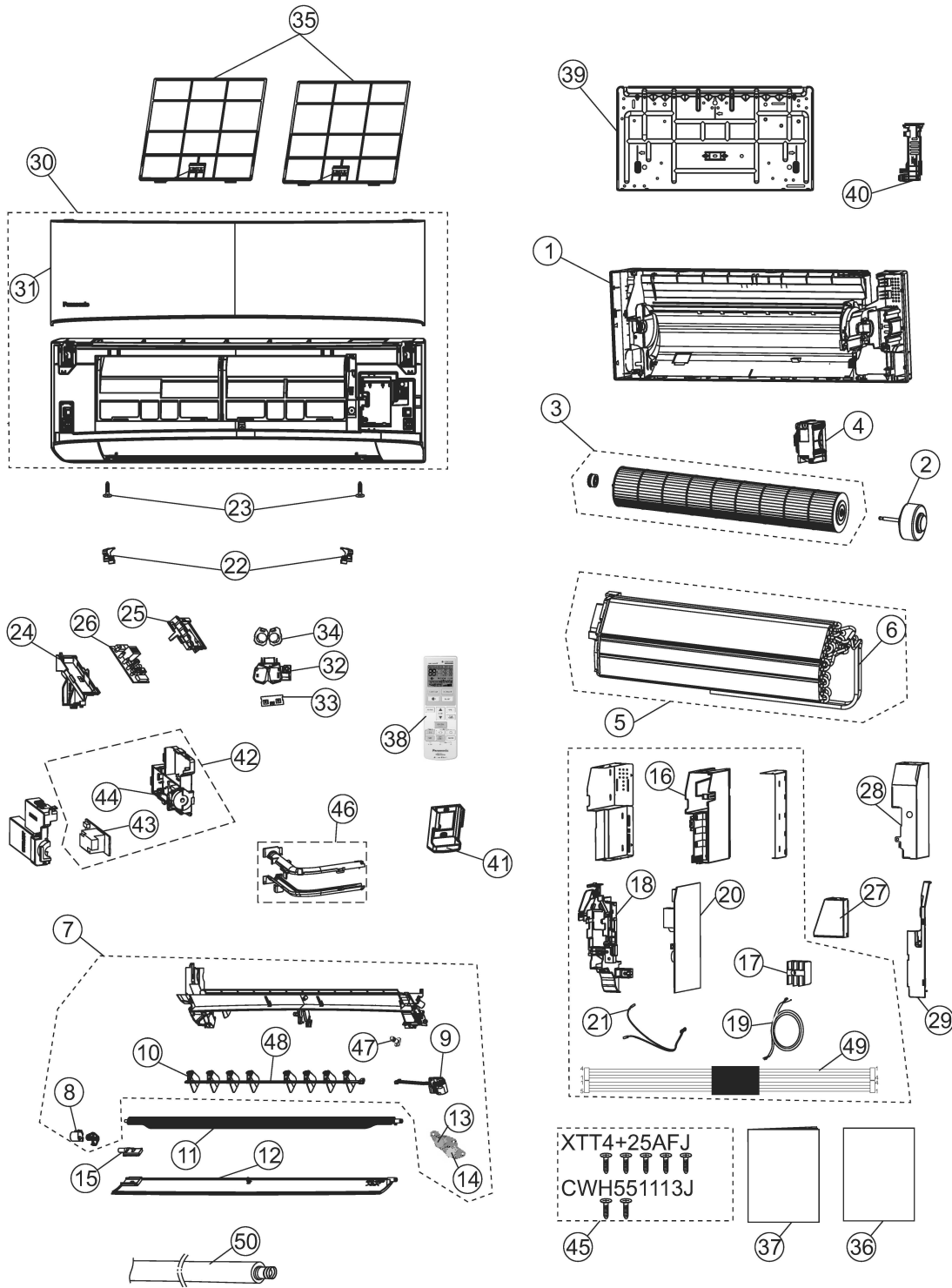


# 14. Exploded View and Replacement Parts List

## 14.1 Indoor Unit

### 14.1.1 CS-S9VKV-2 CS-S12VKV-2 CS-S18VKV-2

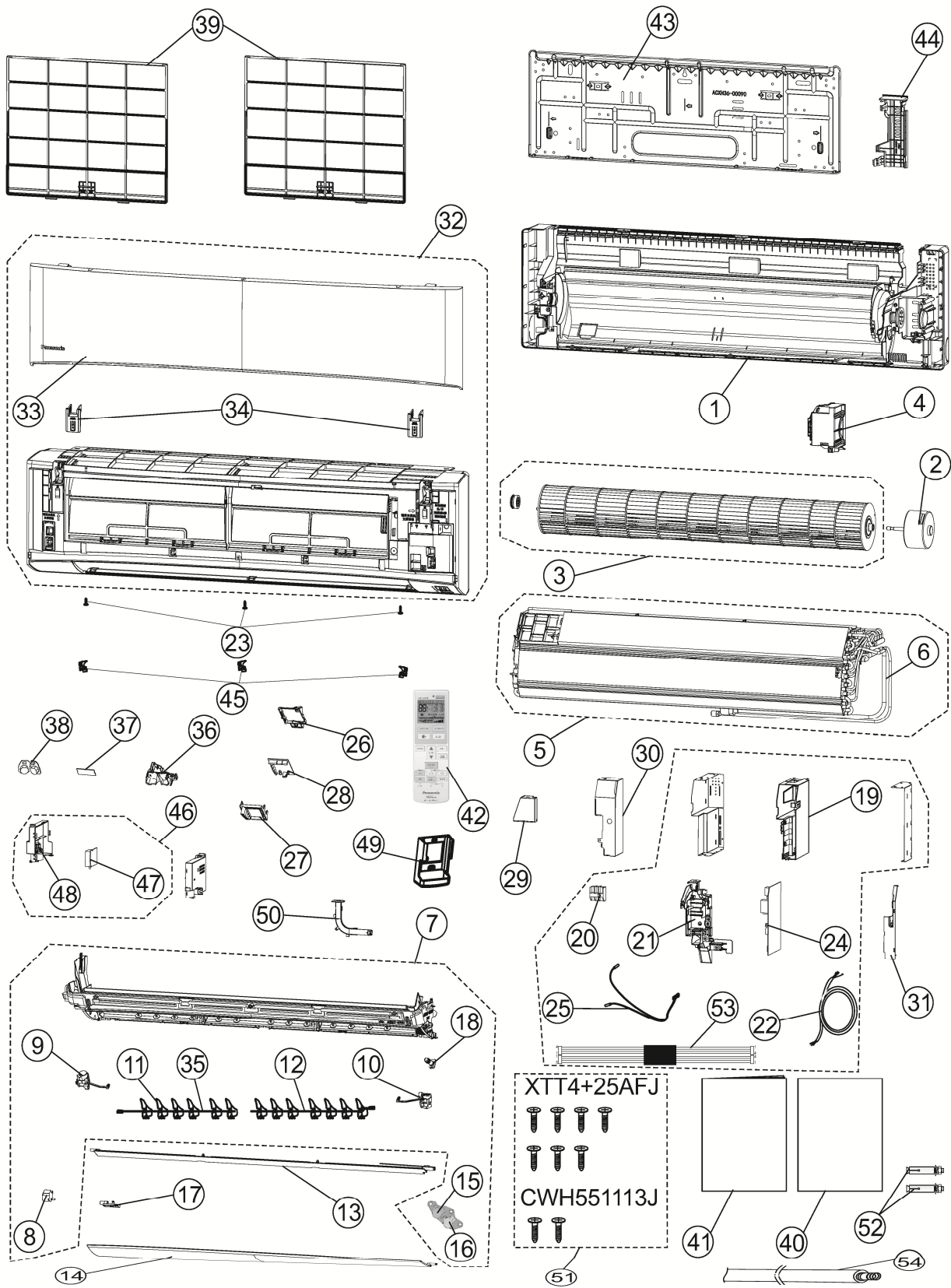


Note  
 The above exploded view is for the purpose of parts disassembly and replacement.  
 The non-numbered parts are not kept as standard service parts.

REF. NO.	PART NAME & DESCRIPTION
1	CHASSIS COMPLETE
2	FAN MOTOR(DC 310V 30W)
3	CROSS-FLOW FAN COMPLETE
4	PARTICULAR PIECE-FAN MOTOR
5	EVAPORATOR
6	AUXILIARY TUBE ASS'Y
7	DISCHARGE GRILLE COMPLETE
8	AIR SWING MOTOR
9	AIR SWING MOTOR
10	VERTICAL VANE
11	HORIZONTAL VANE COMPLETE(INNER)
12	HORIZONTAL VANE COMPLETE(OUTER)
13	AIR SWING MOTOR
14	AIR SWING MOTOR
15	PARTICULAR PIECE
16	CONTROL BOARD CASING
17	TERMINAL BOARD COMPLETE
18	PARTICULAR PIECE - TERMINAL
19	POWER SUPPLY WIRE
20	ELECTRONIC CONTROLLER-MAIN
21	SENSOR COMPLETE
22	CAP - FRONT GRILLE
23	SCREW - FRONT GRILLE
24	INDICATOR HOLDER(BACK)
25	INDICATOR HOLDER (FRONT)
26	ELECTRONIC CONTROLLER (INDICATOR & RECEIVER)

REF. NO.	PART NAME & DESCRIPTION
27	COVER-TERMINAL
28	CONTROL BOARD TOP COVER
29	PARTICULAR PIECE
30	FRONT GRILLE COMPLETE
31	INTAKE GRILLE COMPLETE
32	CONTROL BOARD CASING FOR PCB ECO
33	ELECTRONIC CONTROLLER (COMPARATOR)
34	ELECTRONIC CONTROLLER (ECO SENSOR)
35	AIR FILTER
36	INSTALLATION INSTRUCTION
37	OPERATING INSTRUCTION
38	REMOTE CONTROL COMPLETE
39	INSTALLATION PLATE
40	BACK COVER CHASSIS
41	REMOTE CONTROL HOLDER
42	PARTICULAR PIECE-NANOE
43	ELECTRONIC CONTROLLER-HVU
44	GENERATOR COMPLETE
45	BAG COMPLETE - INSTALLATION SCREW
46	DUTE COMPLETE-NANOE
47	CAP - DRAIN TRAY
48	CONNECTING BAR
49	LEAD WIRE-COMPLETE
50	DRAIN HOSE

14.1.2 CS-S24VKV-2 CS-S28VKV-2



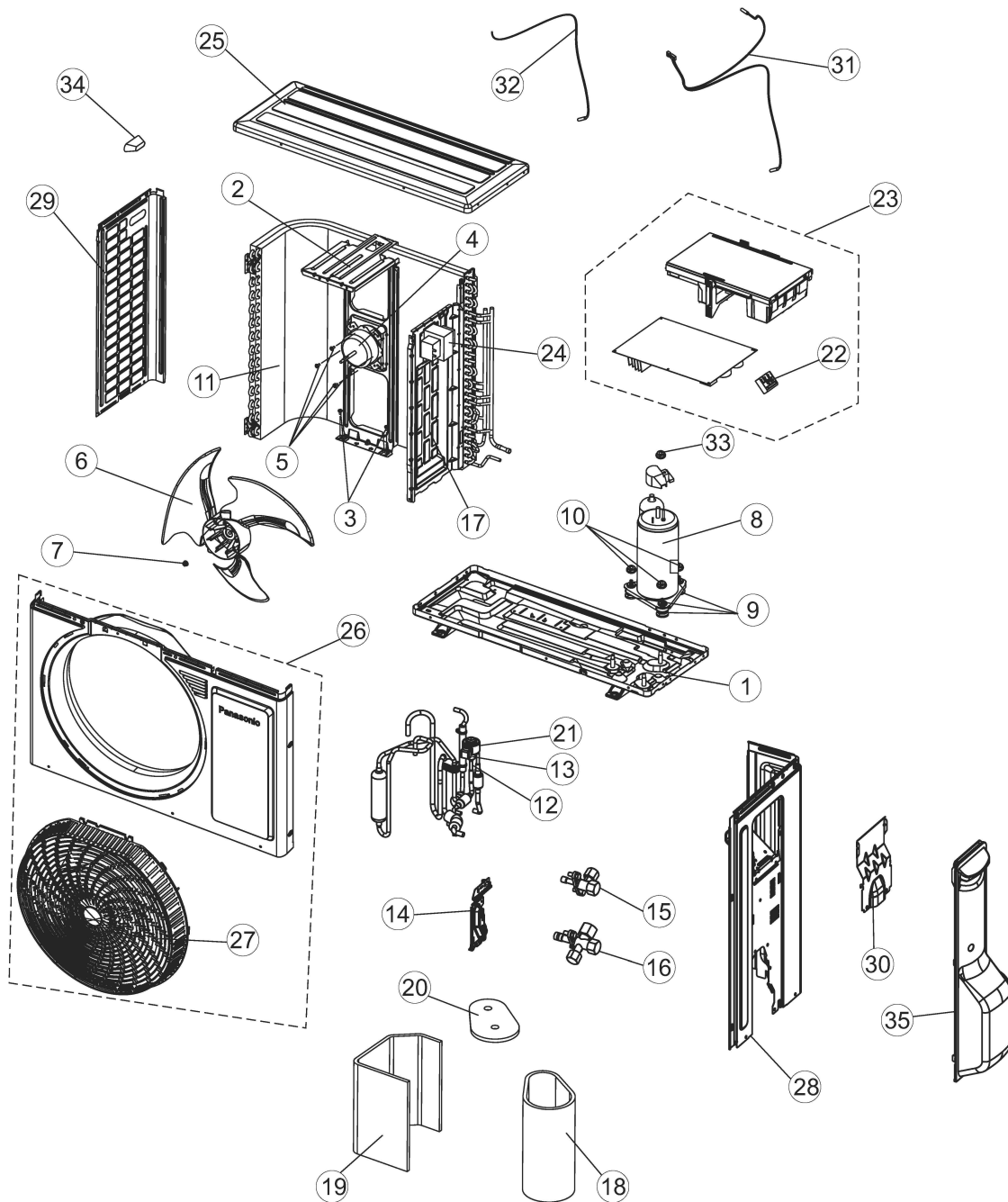
Note  
 The above exploded view is for the purpose of parts disassembly and replacement.  
 The non-numbered parts are not kept as standard service parts.

REF. NO.	PART NAME & DESCRIPTION
1	CHASSIS COMPLETE
2	FAN MOTOR(DC 310V 40W)
2	FAN MOTOR(DC 280V 40W)
3	CROSS-FLOW FAN COMPLETE
4	PARTICULAR PIECE-FAN MOTOR
5	EVAPORATOR
6	AUXILIARY TUBE ASSY
7	DISCHARGE GRILLE COMPLETE
8	AIR SWING MOTOR
9	AIR SWING MOTOR
10	AIR SWING MOTOR
11	VERTICAL VANE
12	CONNECTING BAR(RIGHT)
13	HORIZONTAL VANE COMPLETE(INNER)
14	HORIZONTAL VANE COMPLETE(OUTER)
15	AIR SWING MOTOR
16	AIR SWING MOTOR
17	PARTICULAR PIECE
18	CAP - DRAIN TRAY
19	CONTROL BOARD CASING
20	TERMINAL BOARD COMPLETE
21	PARTICULAR PIECE - TERMINAL
22	POWER SUPPLY WIRE
23	SCREW - FRONT GRILLE
24	ELECTRONIC CONTROLLER - MAIN
25	SENSOR COMPLETE
26	INDICATOR HOLDER (BACK)
27	INDICATOR HOLDER(FRONT)
28	ELECTRONIC CONTROLLER - (INDICATOR & RECEIVER)
29	COVER-TERMINAL
30	CONTROL BOARD TOP COVER
31	CONTROL BOARD FRONT COVER CO.
32	FRONT GRILLE COMPLETE
33	INTAKE GRILLE COMPLETE
34	HOLDER
35	CONNECTING BAR(LEFT)
36	CONTROL BOARD CASING FOR PCB ECO
37	ELECTRONIC CONTROLLER (COMPARATOR)

REF. NO.	PART NAME & DESCRIPTION
38	ELECTRONIC CONTROLLER (ECO SENSOR)
39	AIR FILTER
40	OPERATING INSTRUCTION
41	INSTALLATION INSTRUCTION
42	REMOTE CONTROL COMPLETE
43	INSTALLATION PLATE
44	BACK COVER CHASSIS
45	CAP - FRONT GRILLE
46	PARTICULAR PIECE-NANOE
47	ELECTRONIC CONTROLLER - HVU
48	GENERATOR COMPLETE
49	REMOTE CONTROL HOLDER
50	DUTE COMPLETE-NANOE
51	BAG COMPLETE - INSTALLATION SCREW
52	EXPANSION SCREW
53	LEAD WIRE-COMPLETE
54	DRAIN HOSE

## 14.2 Outdoor Unit

### 14.2.1 CU-S9VKV-2



#### Note

The above exploded view is for the purpose of parts disassembly and replacement.  
The non-numbered parts are not kept as standard service parts.