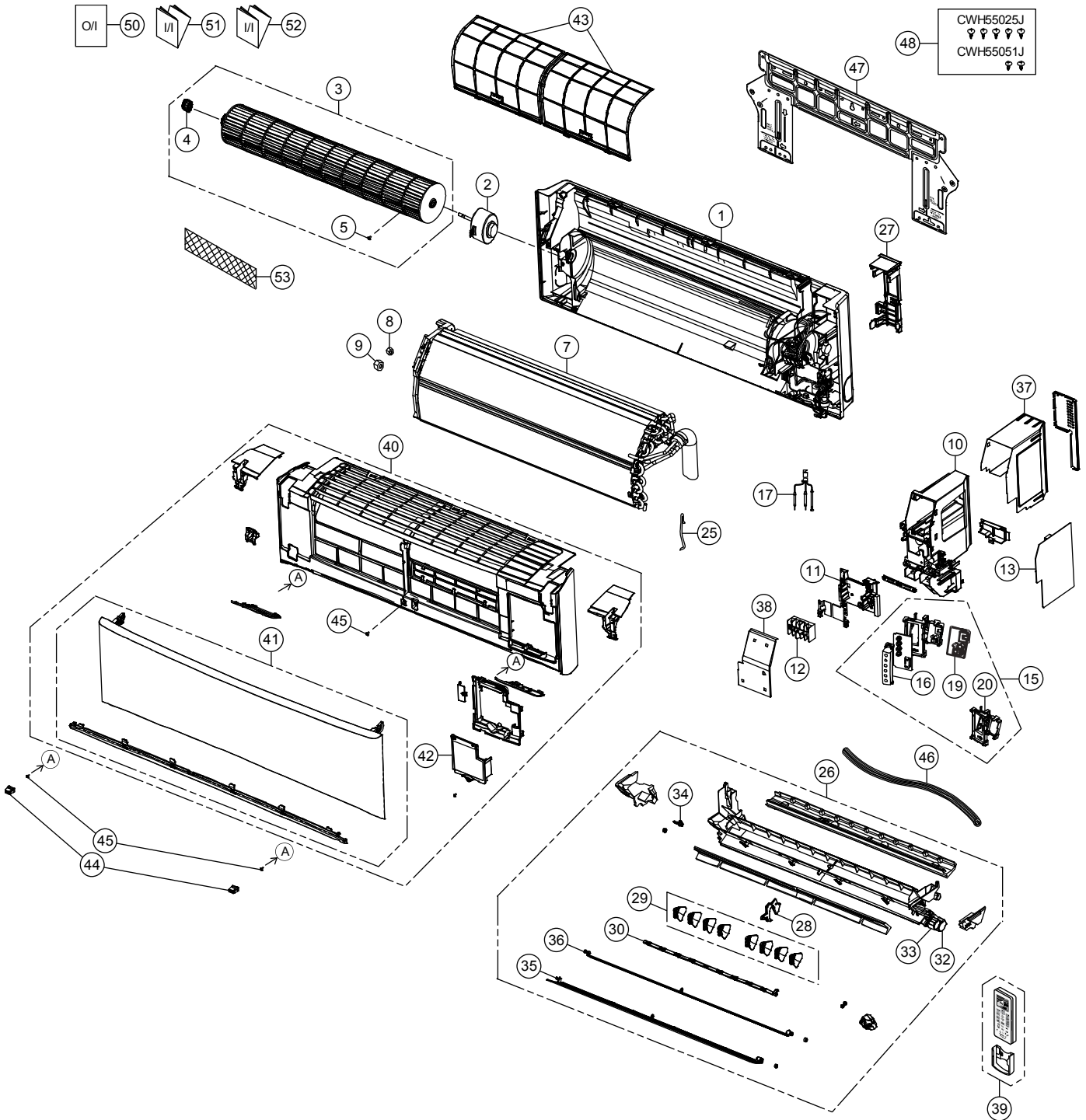


17. Exploded View and Replacement Parts List

17.1 Indoor Unit

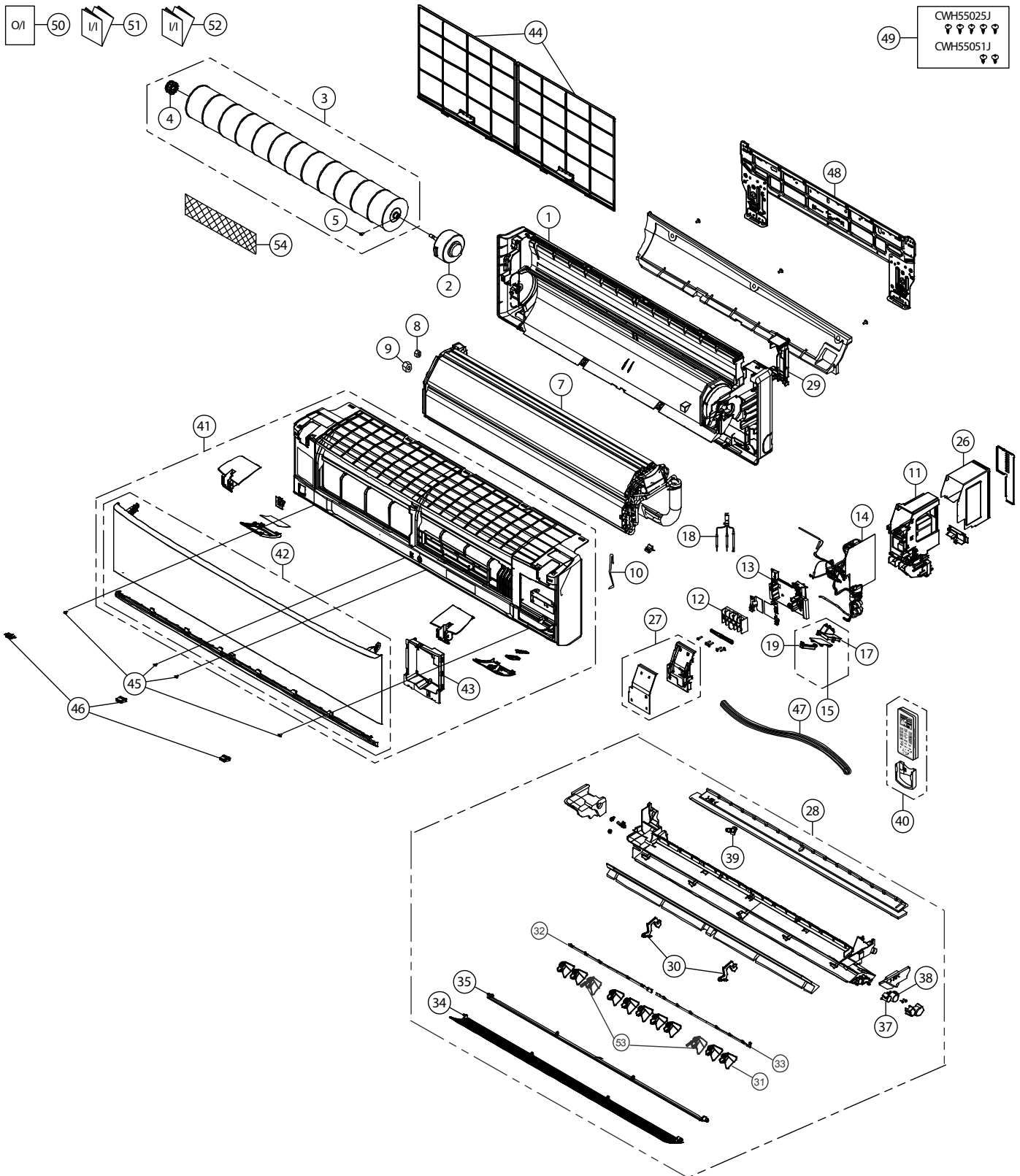
17.1.1 CS-PS9TKV CS-PS12TKV





Note
 The above exploded view is for the purpose of parts disassembly and replacement.
 The non-numbered parts are not kept as standard service parts.

SAFETY	REF. NO.	PART NAME & DESCRIPTION	QTY.	REMARK
	1	CHASSIS COMPLETE	1	
	2	FAN MOTOR	1	O
	3	CROSS-FLOW FAN COMPLETE	1	
	4	BEARING ASSY	1	
	5	SCREW - CROSS-FLOW FAN	1	
	7	EVAPORATOR	1	
	8	FLARE NUT (LIQUID)	1	
	9	FLARE NUT (GAS)	1	
	10	CONTROL BOARD CASING	1	
	11	PARTICULAR PIECE - TERMINAL	1	
	12	TERMINAL BOARD COMPLETE	1	
	13	ELECTRONIC CONTROLLER - MAIN	1	O
	15	ELECTRONIC CONTROLLER - INDICATOR	1	O
	16	INDICATOR HOLDER	1	
	17	SENSOR COMPLETE	1	O
	19	ELECTRONIC CONTROLLER-RECEIVER	1	O
	20	INDICATOR HOLDER	1	
	25	CLIP FOR SENSOR	1	
	26	DISCHARGE GRILLE COMPLETE	1	
	27	BACK COVER CHASSIS	1	
	28	FULCRUM	1	
	29	VERTICAL VANE	8	
	30	CONNECTING BAR	2	
	32	AIR SWING MOTOR	1	O
	33	AIR SWING MOTOR	1	O
	34	CAP - DRAIN TRAY	1	
	35	HORIZONTAL VANE COMPLETE	1	
	36	HORIZONTAL VANE COMPLETE	1	
	37	CONTROL BOARD TOP COVER	1	
	38	CONTROL BOARD FRONT COVER CO.	1	
	39	REMOTE CONTROL COMPLETE	1	O
	40	FRONT GRILLE COMPLETE	1	O
	41	INTAKE GRILLE COMPLETE	1	
	42	GRILLE DOOR COMPLETE	1	
	43	AIR FILTER	2	O
	44	CAP - FRONT GRILLE	2	
	45	SCREW - FRONT GRILLE	3	
	46	DRAIN HOSE	1	
	47	INSTALLATION PLATE	1	
	48	BAG COMPLETE - INSTALLATION SCREW	1	
	50	OPERATING INSTRUCTION	1	
	51	INSTALLATION INSTRUCTION	1	
	52	INSTALLATION INSTRUCTION	1	
	53	SUPER ALLERU BUSTER FILTER	1	

17.1.2 CS-PS18TKV CS-PS24TKV

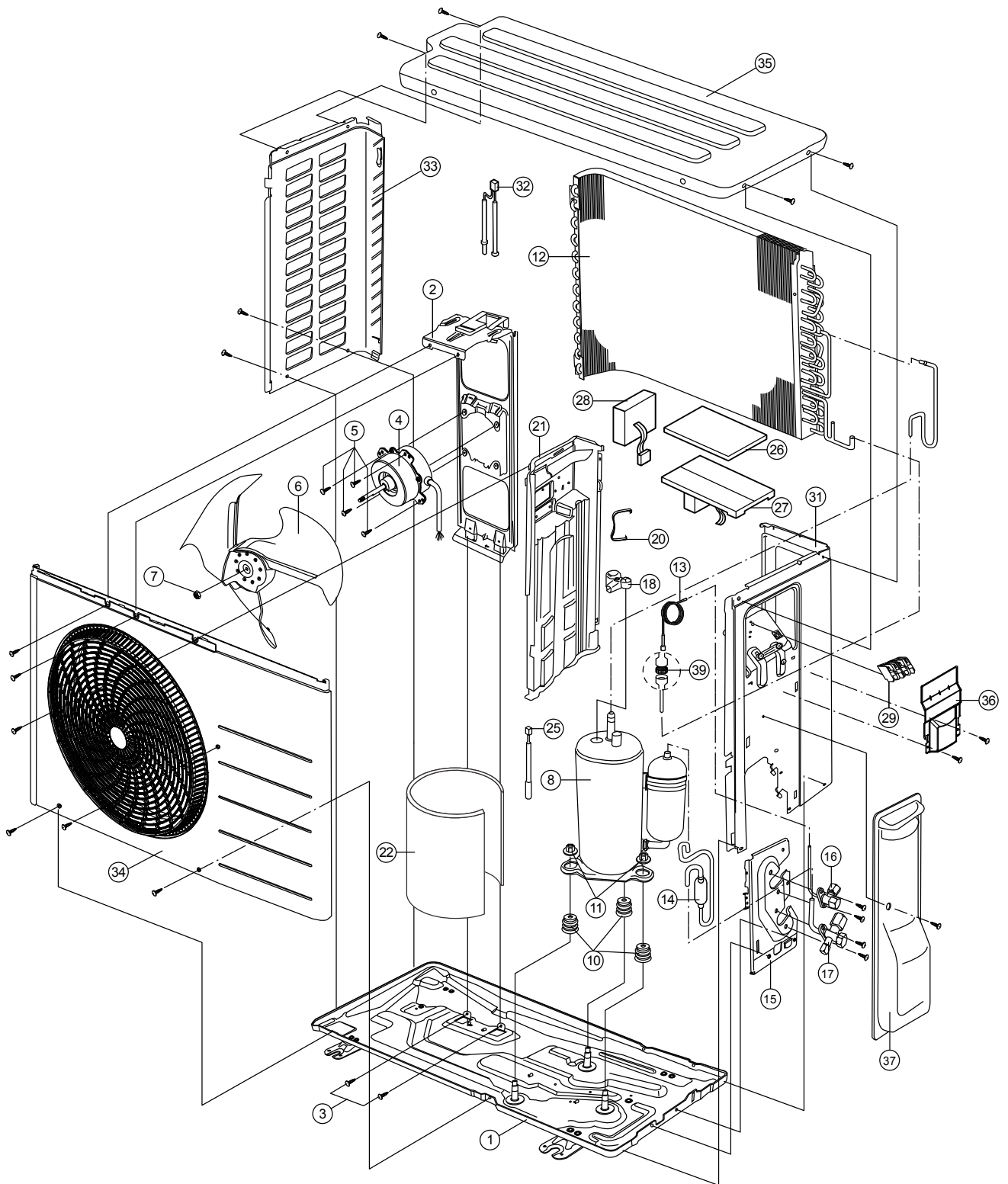


Note
 The above exploded view is for the purpose of parts disassembly and replacement.
 The non-numbered parts are not kept as standard service parts.

SAFETY	REF. NO.	PART NAME & DESCRIPTION	QTY.	REMARK
	1	CHASSIS COMPLETE	1	
	2	FAN MOTOR	1	O
	3	CROSS-FLOW FAN COMPLETE	1	
	4	BEARING ASSY	1	
	5	SCREW - CROSS-FLOW FAN	1	
	7	EVAPORATOR	1	
	8	FLARE NUT (LIQUID)	1	
	9	FLARE NUT (GAS)	1	
	10	CLIP FOR SENSOR	1	
	11	CONTROL BOARD CASING	1	
	12	TERMINAL BOARD COMPLETE	1	O
	13	PARTICULAR PIECE - TERMINAL	1	
	14	ELECTRONIC CONTROLLER - MAIN	1	O
	15	ELECTRONIC CONTROLLER - INDICATOR	1	O
	17	INDICATOR HOLDER	1	O
	18	SENSOR COMPLETE	1	O
	19	INDICATOR HOLDER	1	
	26	CONTROL BOARD TOP COVER	1	
	27	CONTROL BOARD FRONT COVER CO.	1	
	28	DISCHARGE GRILLE COMPLETE	1	
	29	BACK COVER CHASSIS	1	
	30	FULCRUM	2	
	31	VERTICAL VANE	8	
	32	CONNECTING BAR	1	
	33	CONNECTING BAR	1	
	34	HORIZONTAL VANE COMPLETE	1	
	35	HORIZONTAL VANE COMPLETE	1	
	37	AIR SWING MOTOR	1	O
	38	AIR SWING MOTOR	1	O
	39	CAP - DRAIN TRAY	1	
	40	REMOTE CONTROL COMPLETE	1	O
	41	FRONT GRILLE COMPLETE	1	O
	42	INTAKE GRILLE COMPLETE	1	
	43	GRILLE DOOR COMPLETE	1	
	44	AIR FILTER	2	O
	45	SCREW - FRONT GRILLE	4	
	46	CAP - FRONT GRILLE	3	
	47	DRAIN HOSE	1	
	48	INSTALLATION PLATE	1	
	49	BAG COMPLETE - INSTALLATION SCREW	1	
	50	OPERATING INSTRUCTION	1	
	51	INSTALLATION INSTRUCTION	1	
	52	INSTALLATION INSTRUCTION	1	
	53	VERTICAL VANE	3	
	54	SUPER ALLERU BUSTER FILTER	1	

17.2 Outdoor Unit

17.2.1 CU-PS9TKV



Note

The above exploded view is for the purpose of parts disassembly and replacement. The non-numbered parts are not kept as standard service parts.